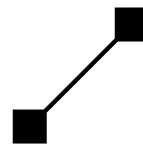


100 m



40 m



**RUTHMANN**  
HIGHquality

Our RuthmannSteiger® TTS 1000 being the highest working cage world-wide at this present time, was introduced to you at our centenarian last year.

Ruthmann-Technology to perfection: In the TTS 1000 you will find that a defined order of magnitude has been reached through combining all criteria to create this Special – Working platform: it possesses a working height of 100.40 m, a lateral outreach of 40 meter in every direction as well as a cage carrying capacity of 500 kg. The Steiger also convinces due to its calmness, stability and safety.

## RUTHMANN STEIGER® TTS 1000



## RUTHMANNSTEIGER® TTS 1000

Possible utilization can be for example: wind power plants, high smoke stacks or direction radio masts. This Steiger is also predestined for working in the lines of building refurbishment or for film and television.

An example which spells out the area of utilization after being erected in one position: Ca. 9000 m<sup>2</sup> - the equivalent of two football grounds. Because, even with a working height of 60 meters the TTS 1000 still has a lateral outreach of 38.00 meters to all sides. Due to its telescopic upper arm system and the 2.40 meter long and 160° swivelling jib (Rüssel®) areas which are difficult to reach become easily accessible. For example: Over and behind buildings or behind Wirings

The enormous stability of this Steiger and the sensitivity of its controlling system ensures safety and well-being even at the height of 100 meters.

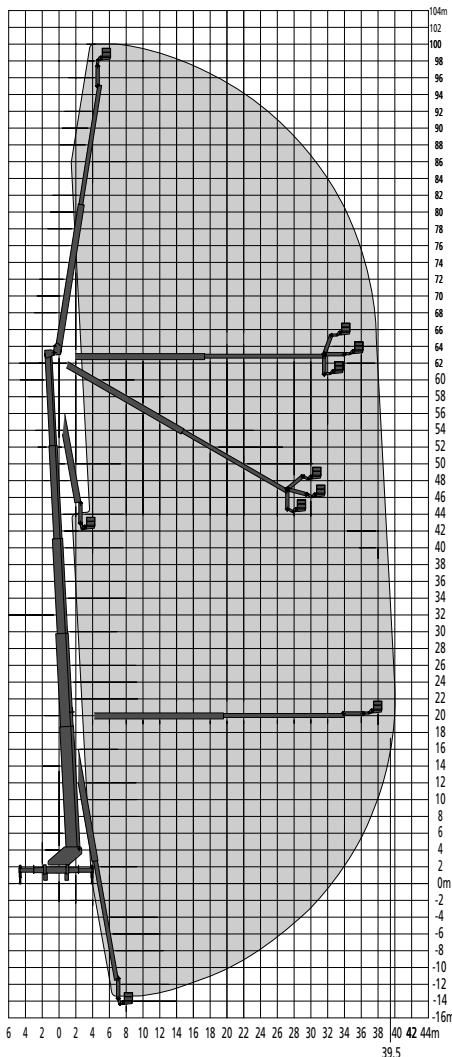
Simple operation in the area of utilization and in traffic is accomplished through the combination of the 3-axle -articulated lorry and the 6-axle Trailer. Four articulating trailer axles can be steered compulsively as well as separately thus enabling a small curve radius and easy positioning of the Steiger at its areas of utilization. An automatic system enables the unit to be vertically erected thus bringing the cage into an entering position.

We can also offer you variations of our "Kingsize" which are our Steiger TTS 840 (working height 84.00 meters) and TTS 650 (working height 65 meters).

## RUTHMANNSTEIGER®

## TTS 1000

Working height	99.50 - 100.40 m
Platform height	98.00 m
Lateral outreach to either side	40.00/39.50 m
Range of rotation	450°
Swivelling angle of Rüssel®	160°
Size of working cage	2.50 x 1.00 m
Extendable to	4.00 x 1.00 m
Carrying capacity of working cage	500/320 kg
Telescopic extension lower / upper boom	42.40/14.00 m
Siting inaccuracy	0°
Overall height	4.00 m



Working cage carrying capacity of 500 kg



All measurements in meter.  
Technical alterations reserved.

Steiger®, Gelenksteiger® and Rüssel® are registered trademarks of the Anton Ruthmann GmbH & Co. KG

Anton Ruthmann GmbH & Co. KG  
Phone: +49 (0) 28 63/204-0  
Fax: +49 (0) 28 63/204-212  
Internet: [www.ruthmann.de](http://www.ruthmann.de)  
eMail: [vertrieb@ruthmann.de](mailto:vertrieb@ruthmann.de)  
Von-Braun-Straße 4  
48712 Gescher-Hochmoor  
Germany

